

### A1/A2/A3/A4/AS/AD plinth

#### Material:

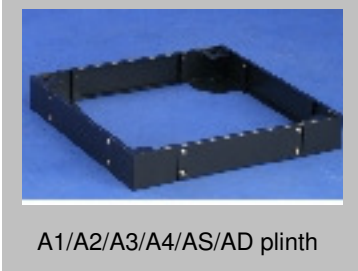
- SPCC cold rolled steel Thickness: Plate 1.2MM, others 2.0MM

#### Surface Finish:

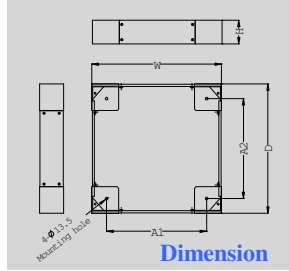
- Degreasing pickling phosphoric powder coated

#### Color:

- RAL9004 RAL7035



A1/A2/A3/A4/AS/AD plinth



Dimension

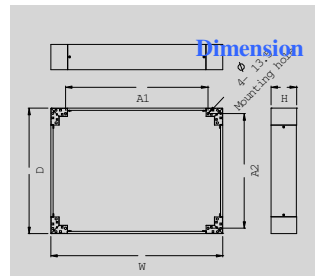
### Specification

Definition of color: SA. . 2:RAL9004 SA. . 3:RAL7035

Model No.	Specification	Dimension(MM)					Use
		W	D	H	A1	A2	
SA.0040.11	66 Plinth(100mm height)	596	596	100	460	460	600-width and 600-depth A1/A2/A3/A4/AS/AD cabinets
SA.0040.21	68 Plinth(100mm height)	596	796	100	460	660	600-width and 800-depth A1/A2/A3/A4/AS/AD cabinets
SA.0040.31	69 Plinth(100mm height)	596	896	100	460	760	600-width and 900-depth A1/A2/A3/A4/AS/AD cabinets
SA.0040.41	60 Plinth(100mm height)	596	996	100	460	820	600-width and 1000-depth A1/A2/A3/A4/AS/AD cabinets
SA.0040.51	86 Plinth(100mm height)	796	596	100	660	460	800-width and 600-depth A1/A2/A3/A4/AS/AD cabinets
SA.0040.61	88 Plinth(100mm height)	796	796	100	660	660	800-width and 600-depth A1/A2/A3/A4/AS/AD cabinets
SA.0040.71	89 Plinth(100mm height)	796	896	100	660	760	800-width and 900-depth A1/A2/A3/A4/AS/AD cabinets
SA.0040.81	80 Plinth(100mm height)	796	996	100	660	820	800-width and 1000-depth A1/A2/A3/A4/AS/AD cabinets
SA.0040.12	66 Plinth(200mm height)	596	596	200	460	460	600-width and 600-depth A1/A2/A3/A4/AS/AD cabinets
SA.0040.22	68 Plinth(200mm height)	596	796	200	460	660	600-width and 800-depth A1/A2/A3/A4/AS/AD cabinets
SA.0040.32	69 Plinth(200mm height)	596	896	200	460	760	600-width and 900-depth A1/A2/A3/A4/AS/AD cabinets
SA.0040.42	60 Plinth(200mm height)	596	996	200	460	820	600-width and 1000-depth A1/A2/A3/A4/AS/AD cabinets
SA.0040.52	86 Plinth(200mm height)	796	596	200	660	460	800-width and 600-depth A1/A2/A3/A4/AS/AD cabinets
SA.0040.62	88 Plinth(200mm height)	796	796	200	660	660	800-width and 800-depth A1/A2/A3/A4/AS/AD cabinets
SA.0040.72	89 Plinth(200mm height)	796	896	200	660	760	800-width and 900-depth A1/A2/A3/A4/AS/AD cabinets
SA.0040.82	80 Plinth(200mm height)	796	996	200	660	820	800-width and 1000-depth A1/A2/A3/A4/AS/AD cabinets



CC plinth



Dimension

### CC plinth

#### Material:

- SPCC cold rolled steel Thickness: Plate 1.2MM, others 2.0MM

#### Surface Finish:

- Degreasing pickling phosphoric powder coated

#### Color:

- RAL9004 RAL7032

### Specification

Definition of color: SA. . 0:RAL7032 SA. . 1:RAL9004

Model No.	Specification	Dimension(MM)					Use
		W	D	H	A1	A2	
SA.0041.64	64 CC Plinth(100mm height)	598	349	100	422	284.5	600-width and 400-depth CC/KB cabinets
SA.0041.65	65 CC Plinth(100mm height)	598	449	100	422	384.5	600-width and 500-depth CC/KB cabinets
SA.0041.66	66 CC Plinth(100mm height)	598	549	100	422	484.5	600-width and 600-depth CC/KB cabinets
SA.0041.84	84 CC Plinth(100mm height)	798	349	100	622	284.5	800-width and 400-depth CC/KB cabinets
SA.0041.85	85 CC Plinth(100mm height)	798	449	100	622	384.5	800-width and 500-depth CC/KB cabinets
SA.0041.86	86 CC Plinth(100mm height)	798	549	100	622	484.5	800-width and 600-depth CC/KB cabinets
SA.0041.04	04 CC Plinth(100mm height)	998	349	100	822	284.5	1000-width and 400-depth CC/KB cabinets
SA.0041.05	06 CC Plinth(100mm height)	998	549	100	822	484.5	1000-width and 600-depth CC/KB cabinets
SA.0042.84	84 CC Plinth(200mm height)	798	349	200	622	284.5	800-width and 400-depth CC/KB cabinets
SA.0042.85	85 CC Plinth(200mm height)	798	449	200	622	384.5	600-width and 500-depth CC/KB cabinets
SA.0042.86	86 CC Plinth(200mm height)	798	549	200	622	484.5	800-width and 600-depth CC/KB cabinets



Adjustable Feet

**Adjustable Feet**

Leveling legs allow cabinet to be leveled on the uneven surface

**Material:**

- Steel

**Surface finish:**

- Carbonic white

**Specification**

Model No.	Specification	Loading Capacity(KG)
SA.0025.011	10	280



Baying kits(for CC/KB cabinet)

**Connector patent**

Connecting CC/KB cabinet with nuts, easy operation and safe

**Material:**

- Steel

**Surface finish:**

- Plated color Zinc

**Remark:** Move side doors when connect

**Specification**

Model No.	Specification
SA.0033.002	Baying kit (for CC/KB cabinet)



Baying kits(for A1/A2/A3/A4/AS/AD)

**Connector patent**

Connecting A1/A2/A3/A4/AS/AD cabinet without nuts, easy operation and safe

**Material:**

- SPCC cold rolled steel t2.0

**Surface finish:**

- Plated color Zinc

**Remark:** Move side doors when connect

**Specification**

Model No.	Specification
SA.0033.001	Baying kit (for A1/A2/A3/A4/AS/AD cabinet)



Castor with two wheel

**Castor with two wheel**

**Surface finish:**

- Orchid Zinc

**Specification**

Model No.	Specification	Load (KG)
SA.0026.006	2 heavy duty Castor with two wheel	240



3 heavy duty Castor with brake

**3 Heavy duty Castor with brake**

**Surface finish:**

- Orchid Zinc

**Specification**

Model No.	Specification	Load (KG)
SA.0026.007	3 heavy duty Castor with brake	150



Keyboard with mouse panel

### Keyboard with mouse panel

19 cabinet, keyboard with mouse, easy to operate

**Material:**

- SPCC cold rolled steel t1.2/12 3pcs sliding rails

**Surface finish:**

- Degreasing, pickling, phosphoric, powder coated

**Parameter:**

- Flexing length: 220mm loading capacity: 20 KG

### Specification

Model No.	Specification	Height (U)
SA.0022.00	Keyboard with mouse panel	2U

**Definition of color:**

- SA. : 1:RAL9004
- SA. : 2:RAL7035



Cooling fan

### Cooling fan

Lower-noise , long lifespan, plastic filter optional

**Dimension:**

- 120mm\*120mm\*38mm

**Mounting dimension:**

- 105mm\*105mm

**Air flowing:**

- 50-110CBM/H

### Specification:

Model No.	Specification	Voltage
SA.0014.001	Cooling fan	220V
SA.0014.002	Cooling fan	110V
SA.0014.003	Cooling fan(Direct current)	48V
SA.0014.004	Cooling fan(ball bearing )	220V
SA.0014.005	Cooling fan(ball bearing )	110V
SA.0014.006	Cooling fan(Direct current/ball bearing)	48V



Small round lock

### Small round lock

Simple structure, economic, operate easily

**Surface finish:**

- Plated Nickel

### Specification

Model No.	Spring height MM
SA.0027.001	103-25,universal key
SA.0027.004	103-20,universal key
SA.0027.005	103-16,universal key
SA.0027.006	103-16, side panel lock (with sheet metal)



Advanced moon-shaped lock

### Advance moon-shaped lock

Surface in silver gray, spinning structure, special surface with coating

**Surface finish:**

- Oxidation powdered

### Specification

Model No.	Specification
SA.0027.003	Advanced moon-shaped lock



Spring lock

### Spring lock

Spring lock with spinning structure, handle will be automatically open front, surface with special coating

**Surface finish:**

- Black oxidation powdered

### Specification:

Model No.	Specification
SA.0027.002	Spring lock (without lock pin)
SA.0027.007	Spring lock (for AD cabinet)
SA.0027.008	Spring lock (for AS cabinet)



1U Metal cable management

## 1U Metal cable management

19 cabinet , removable metal cable management ring

**Material:**

SPPC t1.5/metal cable management ring

**Surface Finish:**

Degreasing pickling phosphoric powder coated

**Color:**

RAL9004 RAL7035

### Specification

Model No.	Specification	Height(U)
SA.0020.04	1U Metal cable management	1U

**Definition of color:**

SA. . 1:RAL9004

SA. . 2:RAL7035



1U Plastic cable management

## 1U Plastic cable management

19 cabinet , removable plastic cable management ring

**Material:**

SPPC t1.5/plastic cable management ring

**Surface Finish:**

Degreasing pickling phosphoric powder coated

**Color:**

RAL9004 RAL7035

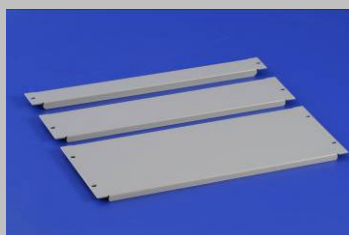
### Specification

Model No.	Specification	Height(U)
SA.0020.03	1U Plastic cable management	1U

**Definition of color:**

SA. . 1:RAL9004

SA. . 2:RAL7035



Blanking panel

## Blanking panel

19 cabinets as blanking plate

**Material:**

SPPC cold rolled steel t1.2

**Surface Finish:**

Degreasing pickling phosphoric powder coated

**Color:**

RAL9004 RAL7035

### Specification

Model No.	Specification	Height (U)
SA.0006.01	1U Blanking panel	1U
SA.0006.02	2U Blanking panel	2U
SA.0006.04	4U Blanking panel	4U

**Definition of color:**

SA. . 1:RAL9004

SA. . 2:RAL7035



Display panel

## Display Panel

19 cabinets as display plate with height 10U

**Material:**

SPPC cold rolled steel t1.2

**Surface Finish:**

Degreasing pickling phosphoric powder coated

**Color:**

RAL9004 RAL7035

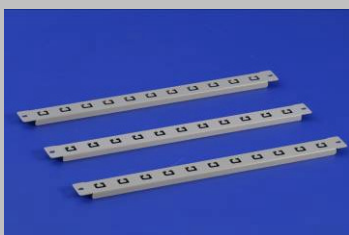
### Specification

Model No.	Specification	Dimension of Window
SA.0012.15	15 display panel	285*215
SA.0012.17	17 display panel	320*240

**Definition of color:**

SA. . 1:RAL9004

SA. . 2:RAL7035



Shunting rail

## Shunting rail

Use for 19 cabinets fastening cables

**Material:**

SPPC cold rolled steel t1.5

**Surface Finish:**

Degreasing pickling phosphoric powder coated

**Color:**

RAL9004 RAL7035

### Specification

Model No.	Specification	Height(U)
SA.0043.19	1U Plastic cable management	1U

**Definition of color:**

SA. . 1:RAL9004

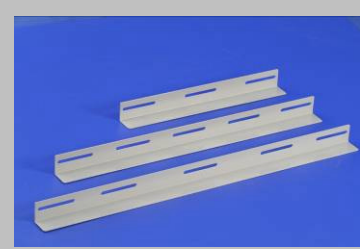
SA. . 2:RAL7035

**Specification**

Model No.	Specification	Use
SA.6001.00	60L rail	600-depth cabinets
SA.8001.00	80L rail	800-depth cabinets
SA.9001.00	90L rail	900-depth cabinets
SA.9101.00	96L rail	960-depth cabinets

**Definition of color:**

- SA. . 1: RAL9004
- SA. . 2: RAL7035



L rail

**L rail**

Fastened to mounting rails for supporting equipment

**Material:**

- SPCC cold rolled steel t1.5

**Surface Finish:**

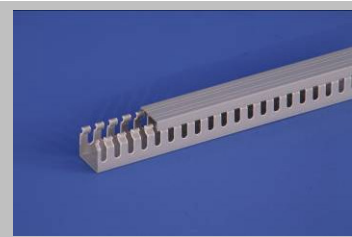
- Degreasing, Pickling, Phosphoric, Powder coated

**Color:**

- RAL9004 RAL7035

**Specification**

Model No.	Specification	Length (M)
SA.0028.200	35*35	2 0.02
SA.0028.201	50*50	2 0.02
SA.0028.2	35*35	Based on U mark
SA.0028.3	50*50	Based on U mark



Plastic cable management slot

**Plastic cable management slot**

Use for cables in cabinets

**Color:**

- Close to RAL6034



Plastic cable management ring

**Plastic cable management ring:**

For cables in network cabinets

**Material:**

- Plastic

**Height:**

- 2U

**Specification**

Model No.	Color
SA.0031.002	White
SA.0031.003	Black



Metal cable management ring

**Metal cable management ring**

For cables in network cabinets

**Material:**

- SPCC cold rolled steel

**Color:**

- RAL9004
- RAL7035

**Specification**

Model No.	Height(U)
SA.0031.001	For KB cabinet
SA.0031.011	For left hand of A1/A2/T3/T4/AS/TD cabinet
SA.0031.012	For right hand of A1/A2/T3/T4/AS/AD cabinet



Screws & nuts with cushion

**Screws and nuts with cushion**

**Specification:**

- Screw M6\*16 ;Nut M6
- Washer: 6

**Surface finish:**

- Plated Nickel

**Specification:**

Model No.	/bag
SA.0021.003	20pcs



Advanced screws & nuts

**Advanced screws & nuts**

**Specification:**

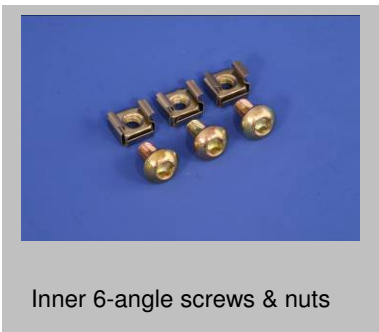
- Screw M6\*12 ;nut M6

**Surface finish:**

- Plated Nickel

**Specification:**

Model No.	/bag
SA.0021.002	20pcs



Inner 6-angle screws & nuts

**Inner 6-angle screws & nuts**

**Specification:**

- Screw M6\*12 ;nut M6

**Surface finish:**

- Plated color Zinc

**Specification**

Model No.	/bag
SA.0021.001	20pcs



1U fan unit

**1U fan unit**

For network cabinet, adjust inner temperature

**Parameter:**

period: 0~50 , input: 220VAC/115VAC

**Material:**

SPCC cold rolled steel t1.2

**Surface finish:**

Degreasing pickling,phosphoric powder coated

**Color:**

**Specification**

Model No.	Specification	Remark
SA.0018.2	1U fan unit with 2fans	2 fans
SA.0018.3	1U fan unit with 3fans	3 fans
SA.0018.4	1U fan unit with 4fans	4 fans



1U fan unit with thermostat

**1U fan unit with the thermostat**

For network cabinet, adjust inner temperature

**Parameter:**

period: 0~50 , input: 220VAC/115VAC

**Material:**

SPCC cold rolled steel t1.2

**Surface finish:**

**Specification**

Model No.	Specification	Remark
SA.0038.2	1U fan unit with 2fans and thermostat	2 fans
SA.0038.3	1U fan unit with 3fans and thermostat	3 fans
SA.0038.4	1U fan unit with 4fans and thermostat	4 fans

**Definition of last number for type of plug**

Model Number	Type of plug	Voltage/HZ	Current
SA. . 0	All-usege type	220V/50-60Hz	10A
SA. . 1	US type	110V/50-60Hz	10A
SA. . 2	German type	220V/50-60Hz	16A
SA. . 3	UK type	220V/50-60Hz	13A

**Definition of last 2 number for color**

Model Number	Color Number
SA. . 1	RAL9004
SA. . 2	RAL7035

**Color**

RAL9004	RAL7035