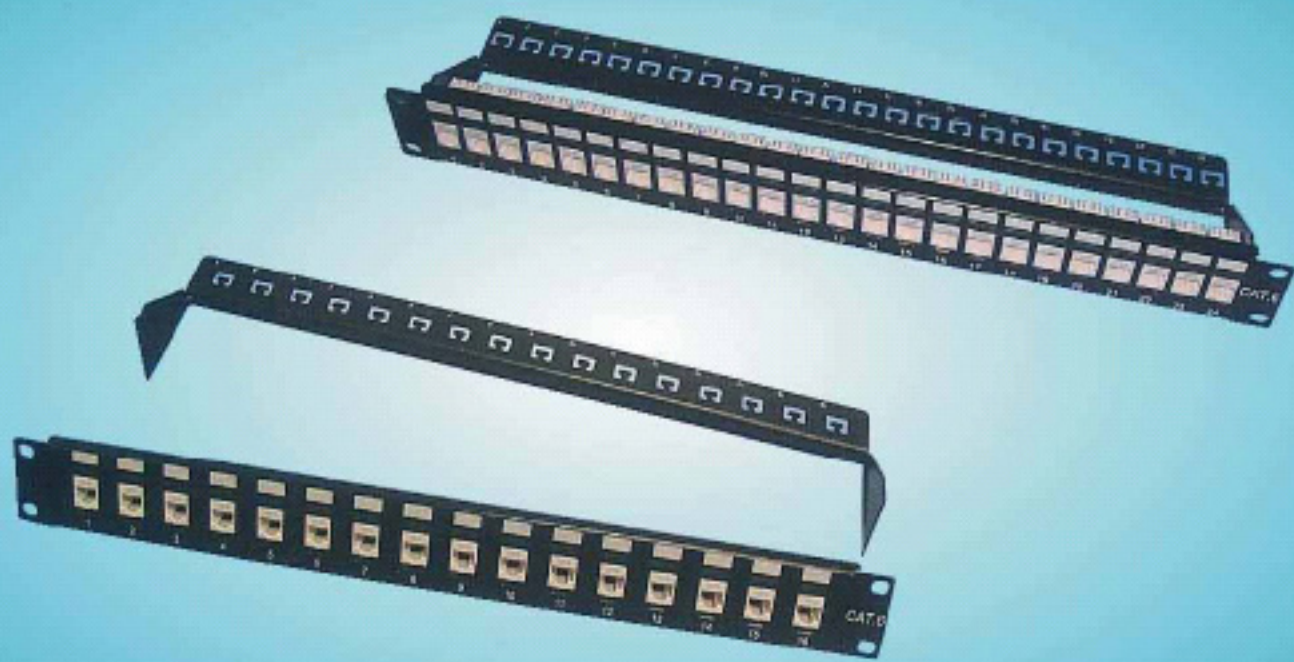


Special Patch Panel

1U 24Way High Density Keystone Panel(Each Keystone Changeable)



Patch Panel Only, w/o Keystone Jack

Features:

- ◆ 1U 24Way High Density Structure save Space
- ◆ Neat and clean flush front view

Panel With Keystone Jack

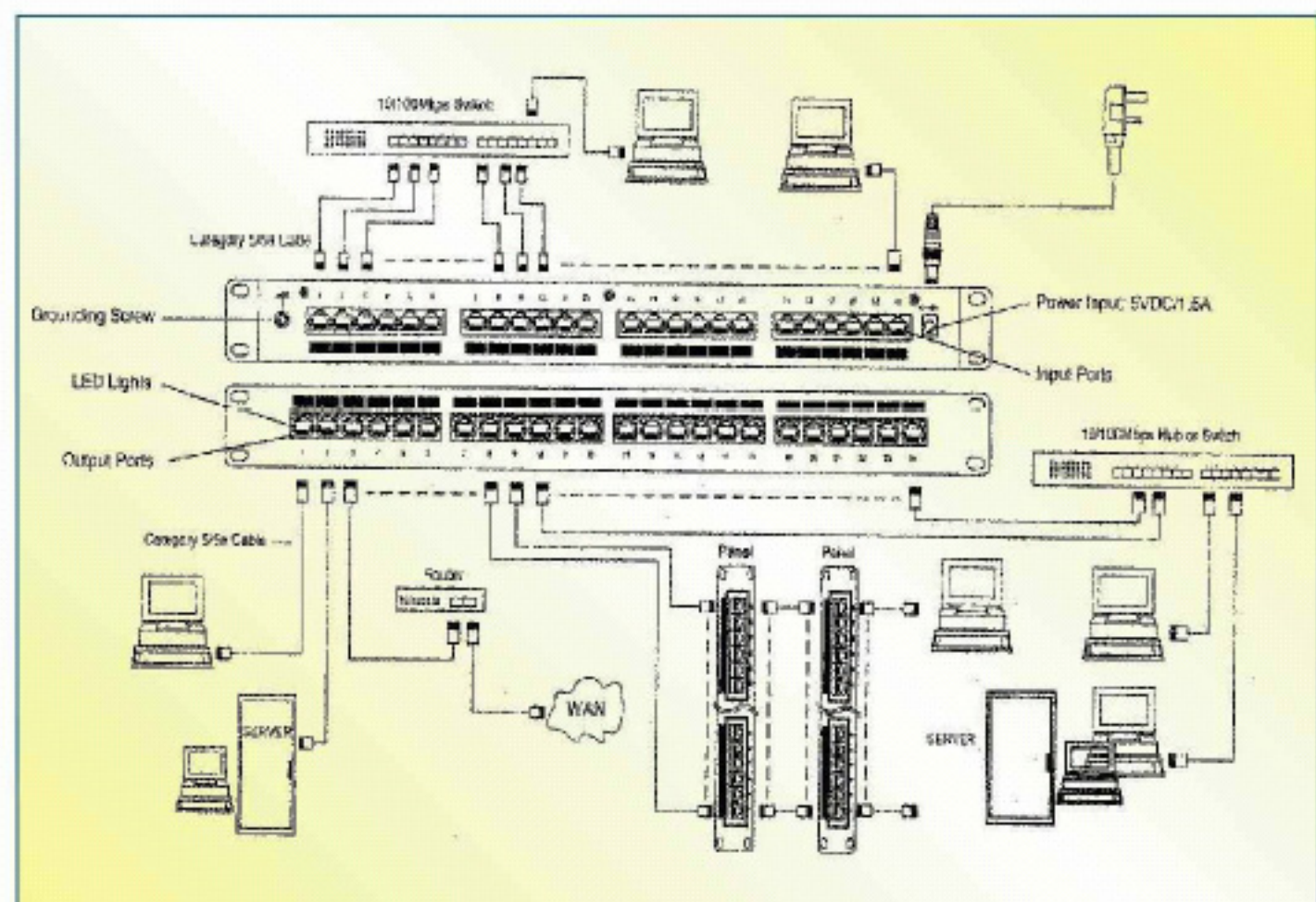
KUWES LED Patch Panel



Features:

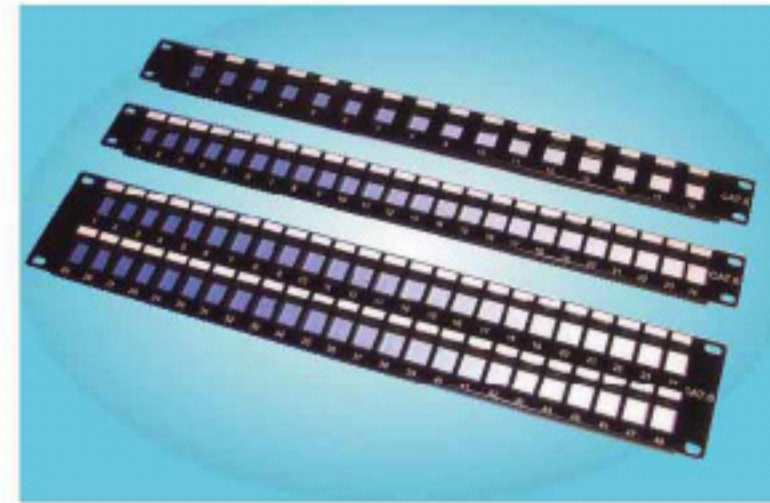
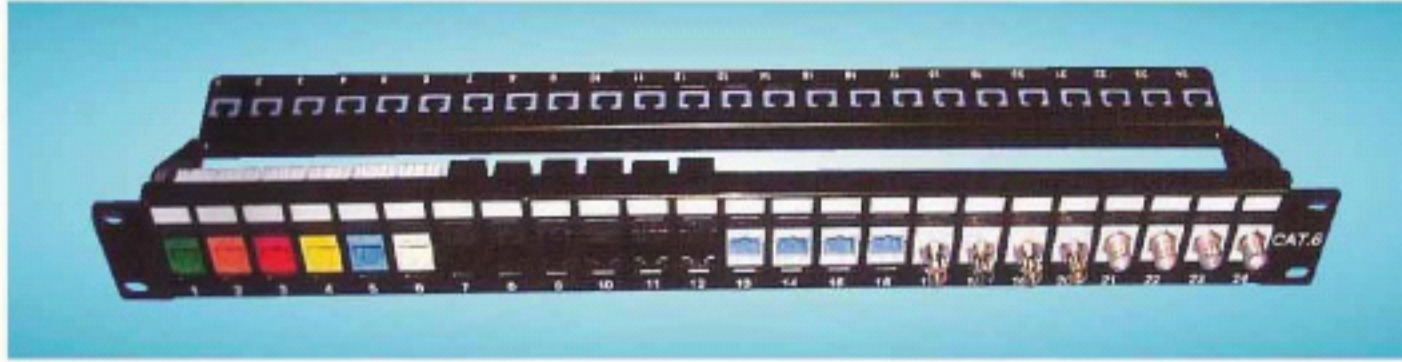
- A. Dual Speed 10Mbps/100Mbps auto-negotiation with speed indication
- B. 24-port to 24-port cross-connection. Standard 19 inch rack mount foot print
- C. Each corresponding input/output port can be connected to 10Mbps/100Mbps equipment
- D. LED indicates the status of the network traffic and connection of each port, make it easy to check and maintenance for structured cabling installation.
- F. Typical setup/usage

Application:



Multi-Media Patch Panel

Multi-Media Patch Panel

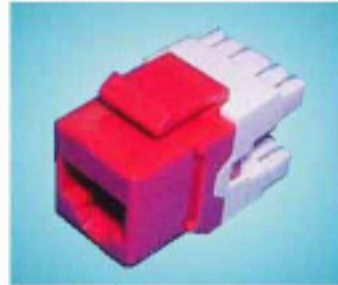


Feature

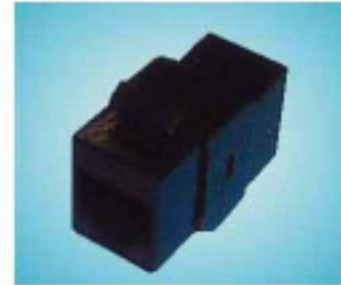
- ◆ Use Keystone Module to Configure the Patch Panel to Accommodate A Variety of Schemes
- ◆ Support Bar - To Avoid Cable Over Bending
- ◆ High Density Structure - 1U 24 Port / 2U 48 Port Save Space
- ◆ 1U 16 / 24 Port & 2U 48 Port are Available



"ST" feed thru module



Cat.6 Keystone Jack



Inline Coupler Keystone

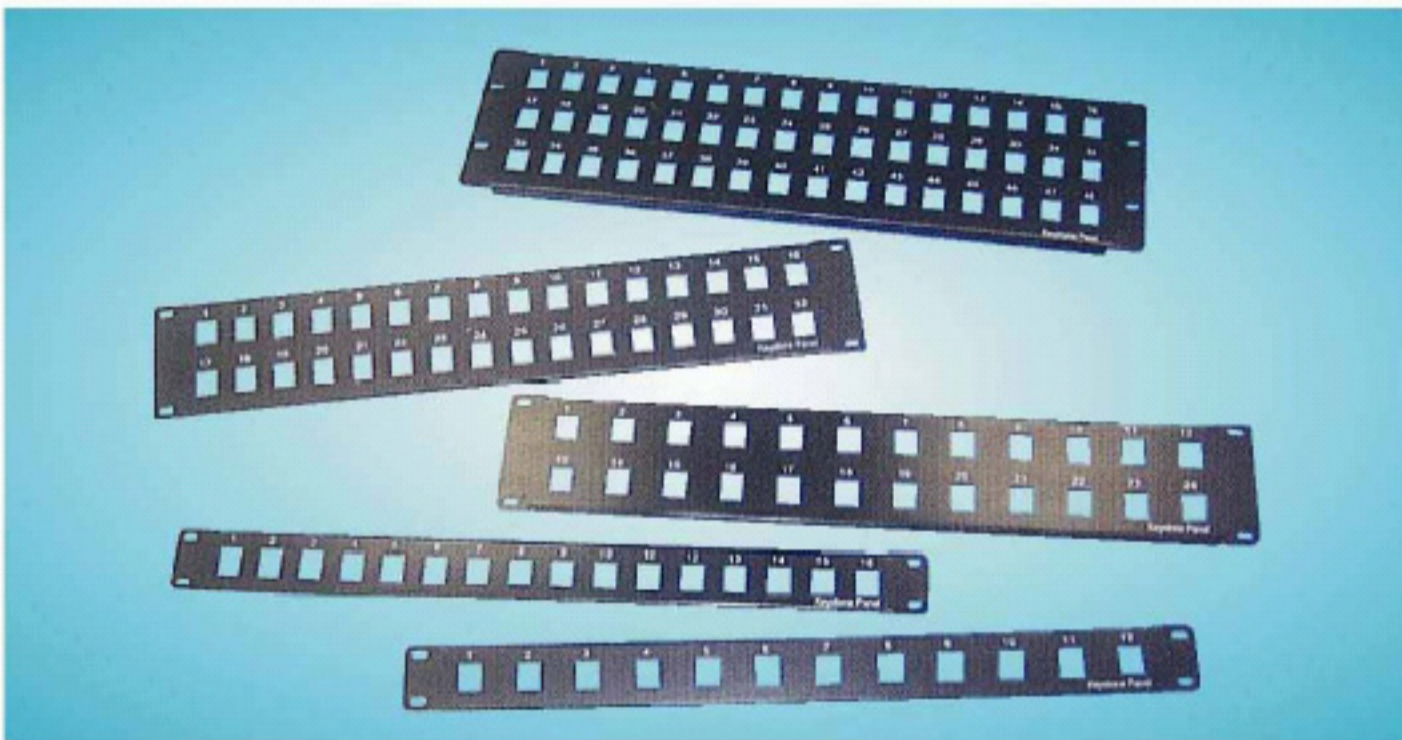


"F" feed thru module



"SC" feed thru module

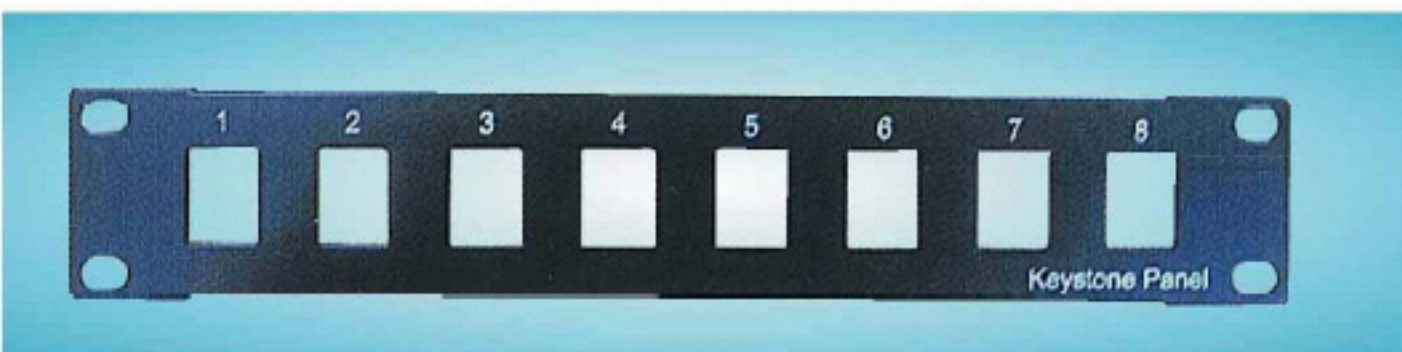
Blank Patch Panel, w/o Keystone Jack



Patch Panel With Keystone Jack



10" 8 Port Keystone Jack Patch panel, For 10" Cabinet



AKJ8-C6-US
Keystone Jack



AKJ9-CE
Keystone Jack



AKJ15-C6-HS
Keystone Jack



AKJ3-CE-US
Keystone Jack



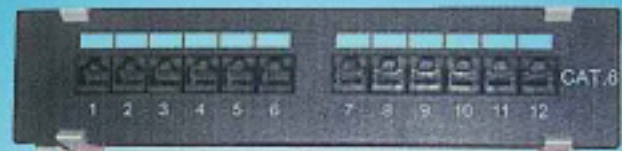
AKJ17-C6-US
Keystone Jack



AKJ18-C6C-US
Keystone Jack
(for high density)

Mini Size & 10" Patch Panel

Cat.5E / 6 Mini 12 Port UTP Patch Panel With 89D Bracket



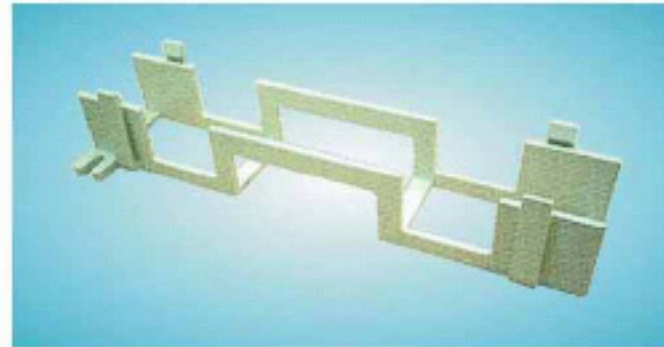
(APMM12T)



(APM12T)

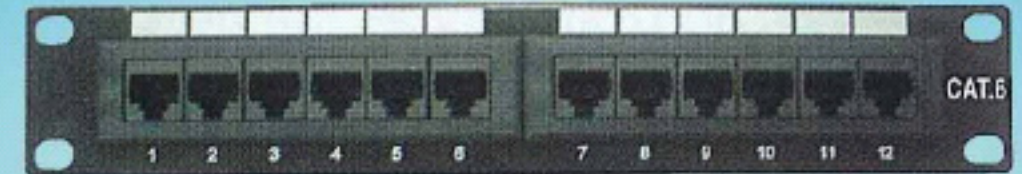


(APMV12T)



AKE321/WH 89D Bracket

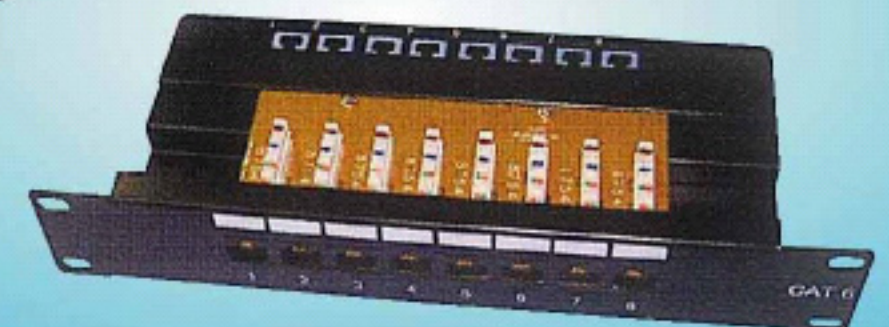
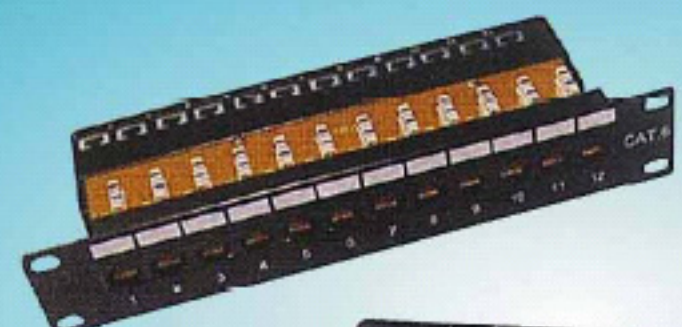
Cat.5E / 6 10" UTP Patch Panel, For 10" Cabinet



Cat.5E / 6 10" Full Shielded Patch Panel, For 10" Cabinet

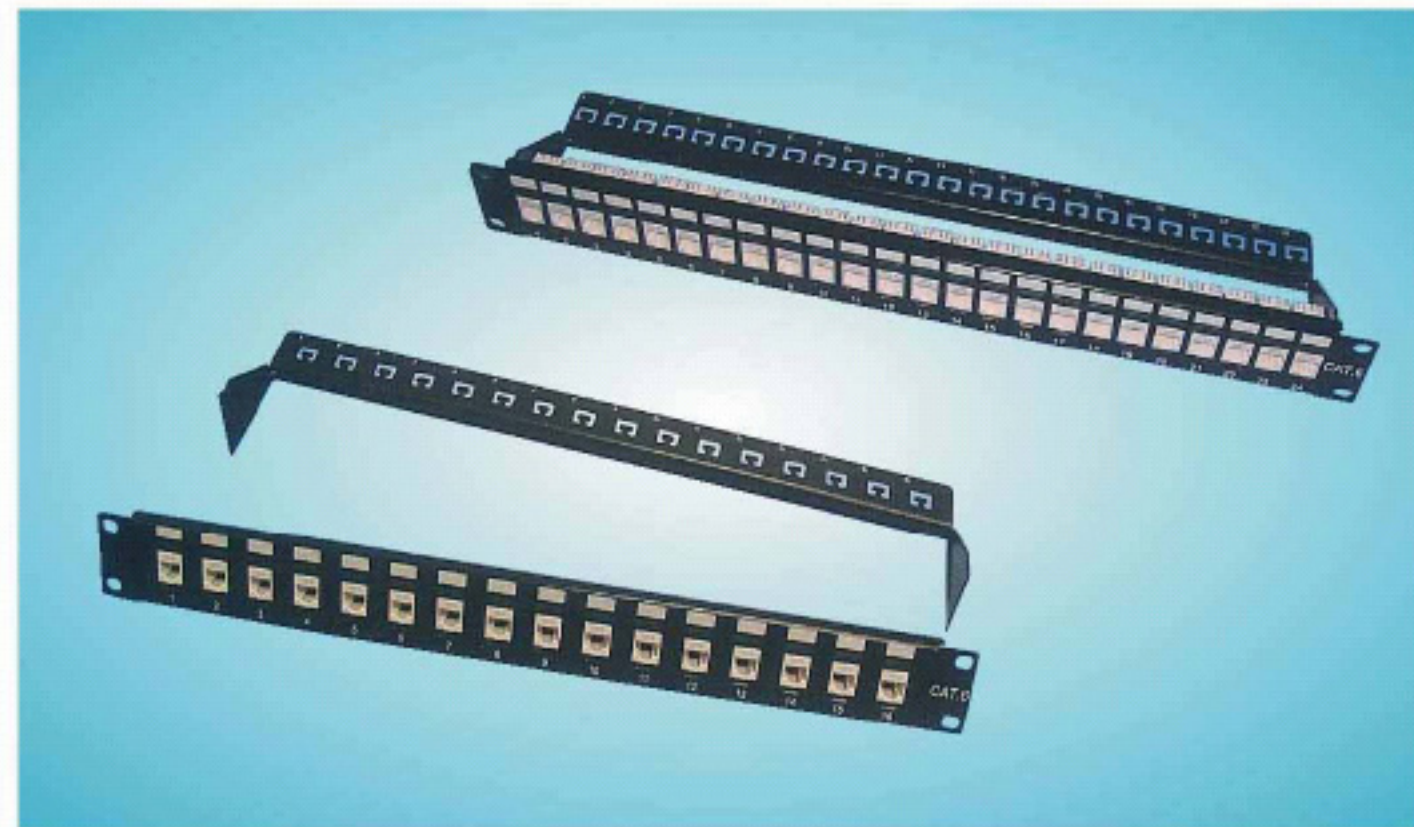


Cat.5E / 6 10" UTP Patch Panel, 90° Type, with Support Bar



Special Patch Panel

1U 24Way High Density Keystone Panel(Each Keystone Changeable)



Patch Panel Only, w/o Keystone Jack

Features:

- ◆ 1U 24Way High Density Structure save Space
- ◆ Neat and clean flush front view

Panel With Keystone Jack

KUWES LED Patch Panel



Features:

- A. Dual Speed 10Mbps/100Mbps auto-negotiation with speed indication
- B. 24-port to 24-port cross-connection. Standard 19 inch rack mount foot print
- C. Each corresponding input/output port can be connected to 10Mbps/100Mbps equipment
- D. LED indicates the status of the network traffic and connection of each port, make it easy to check and maintenance for structured cabling installation.
- F. Typical setup/usage

Application:

