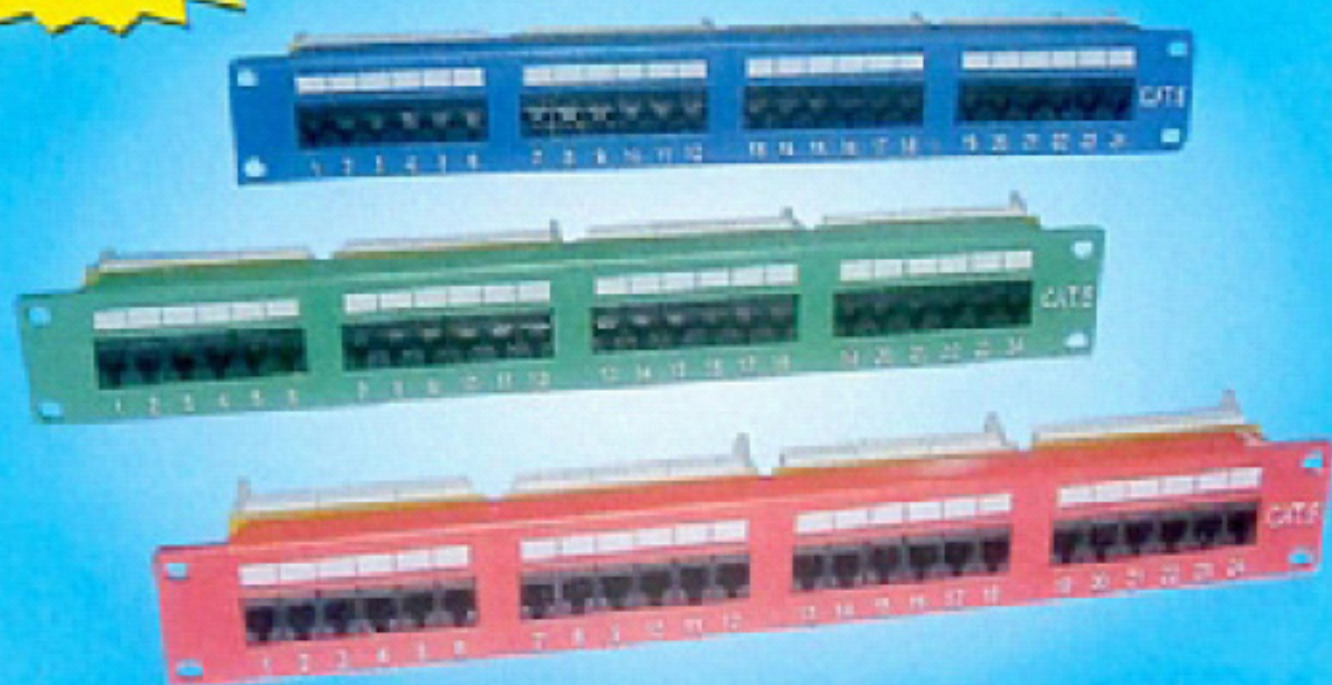


# UTP Unshielded Patch Panel With Top Entry Jack

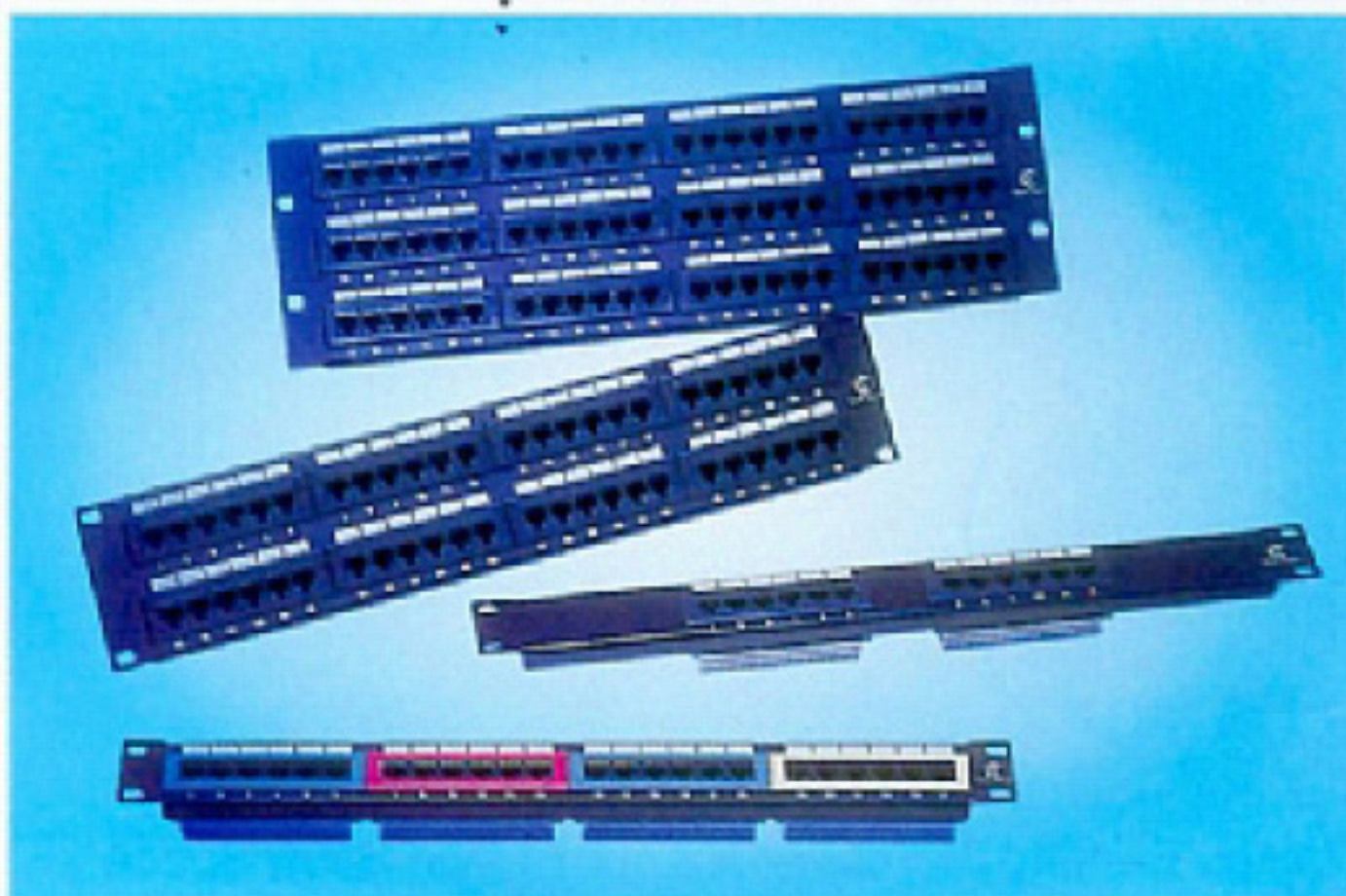
## Cat.5E / 6 UTP Plastic Patch Panel With Top Entry Jack

**NEW**



**Economic Type**

## Cat.5E / 6 UTP Patch Panel With Top Entry Jack

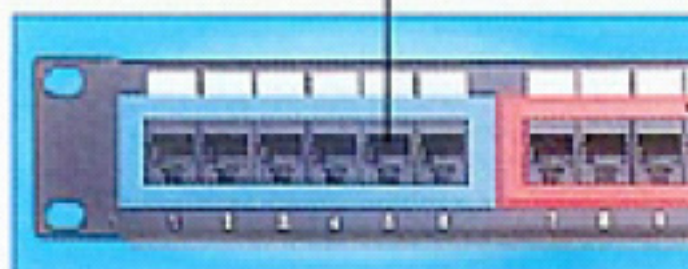


Plastic Panel Body



Top Entry Jack

Top Entry Jack

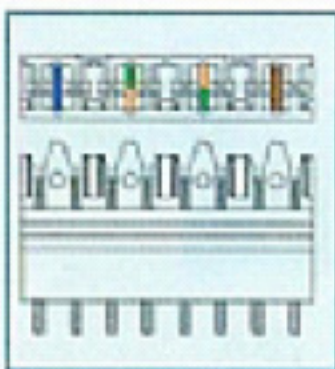


Neat and clean no-screw design on front panel.

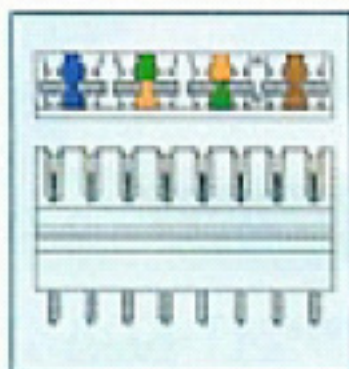
Jack Bracket: Color Optional for Different Wiring System.

### Features:

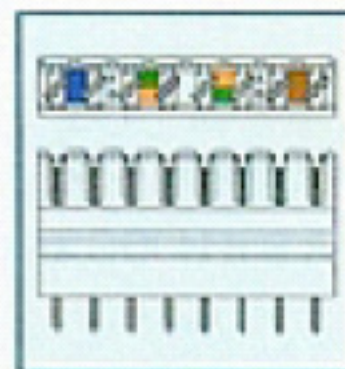
- ◆ Light-weight for lower freight cost
- ◆ Colorful patch panel for color-coding different wiring system



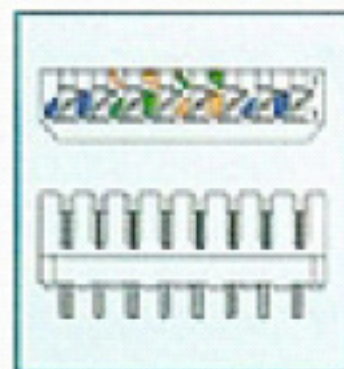
Standard 110D IDC (A11)



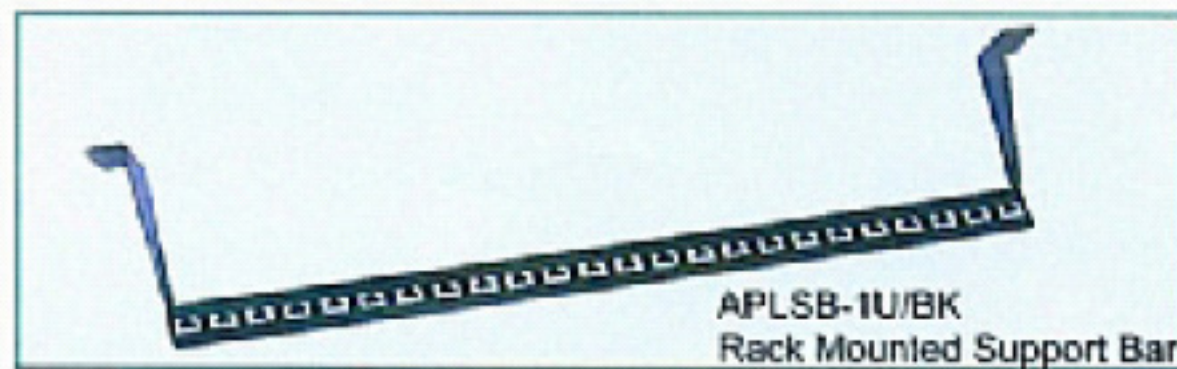
110/Krone Dual IDC (K11)



Krone 45°- 110 Dual IDC (KDA)



Krone IDC (KRO)



APLSB-IU/BK Rack Mounted Support Bar

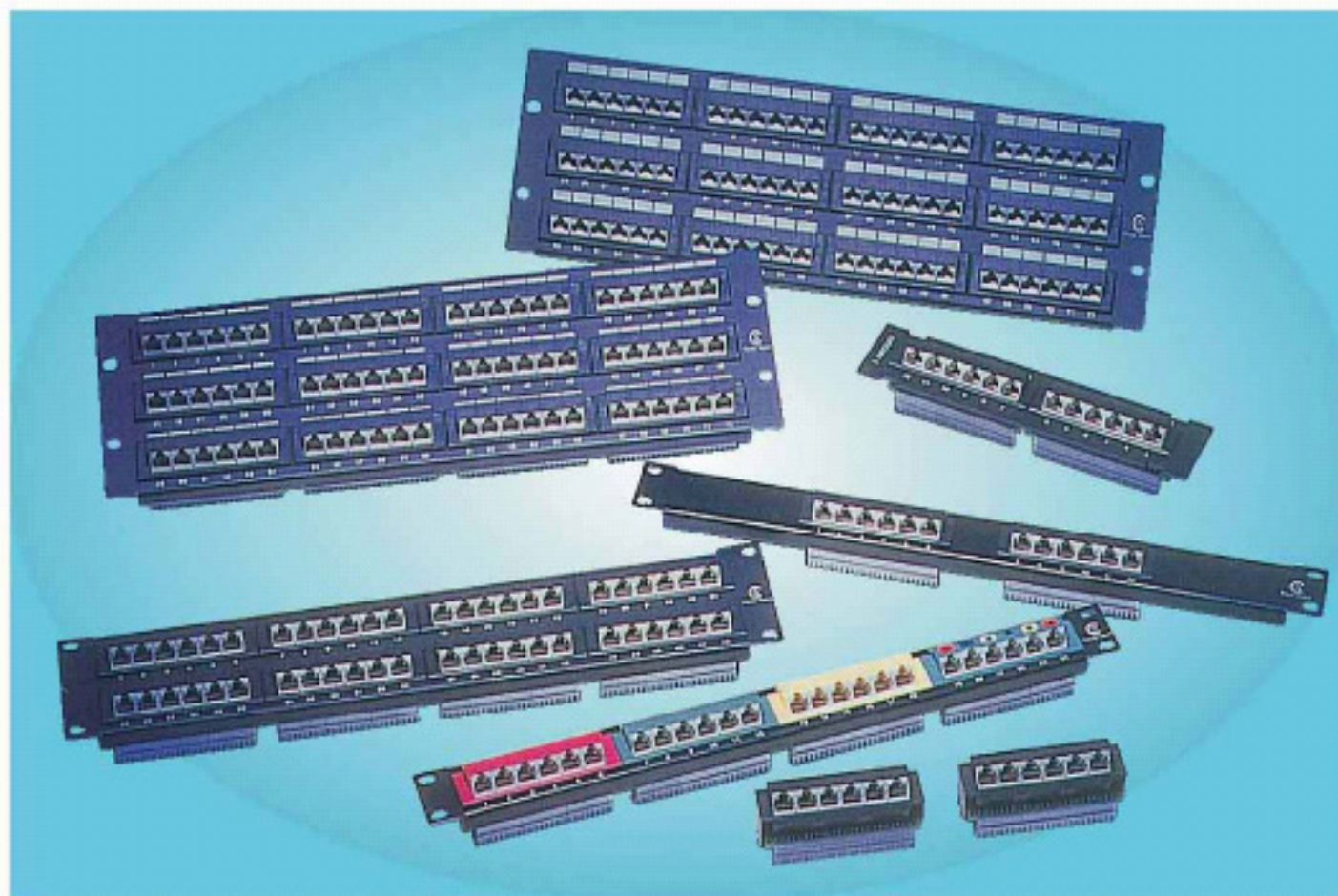
OPTIONAL ITEM: Wiring Support Bar

# UTP Unshielded Patch Panel With 45° Jack

## Cat.5E / 6 UTP Patch Panel With 45° Jack (With Name Plate)



## Cat.5E / 6 UTP Patch Panel With 45° Jack



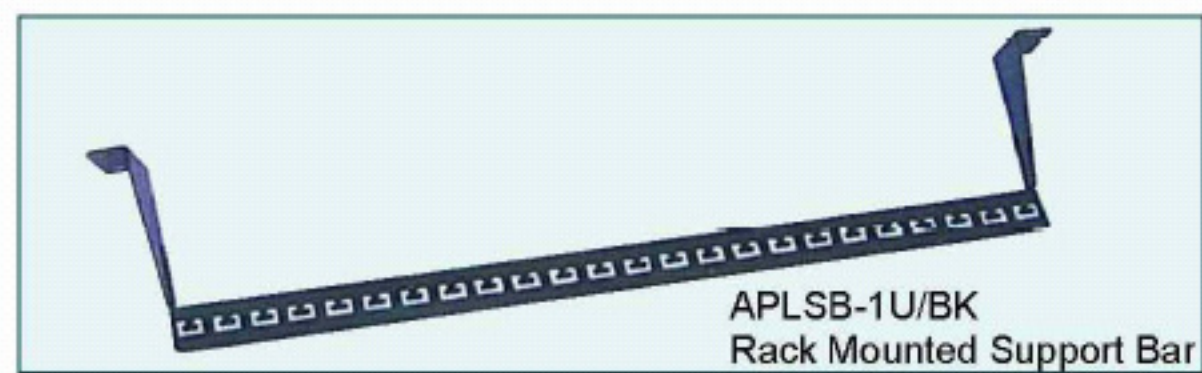
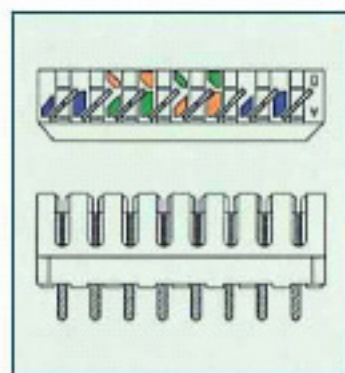
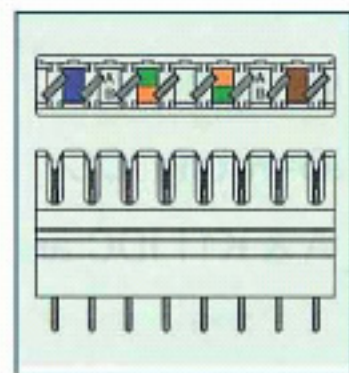
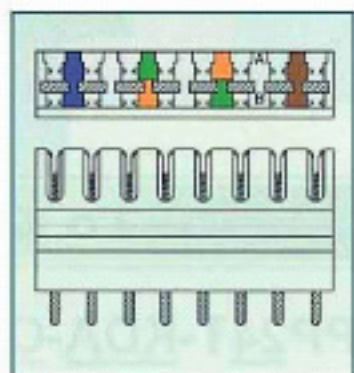
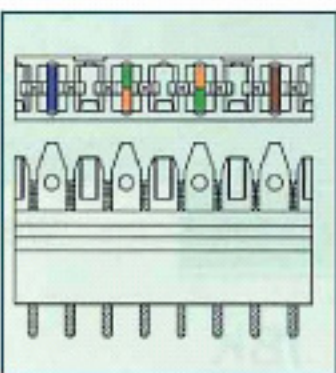
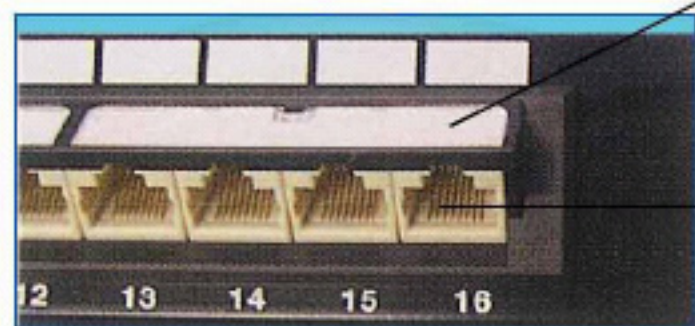
Rotatable Name Plate

45° Jack, to avoid cable bending

Jack Bracket: Color Optional for Different Wiring System.

Icon Sticker

45° Angle Jack, to avoid cable bending



APLSB-1U/BK  
Rack Mounted Support Bar

OPTIONAL ITEM: Wiring Support Bar

Standard 110D  
IDC (A11)

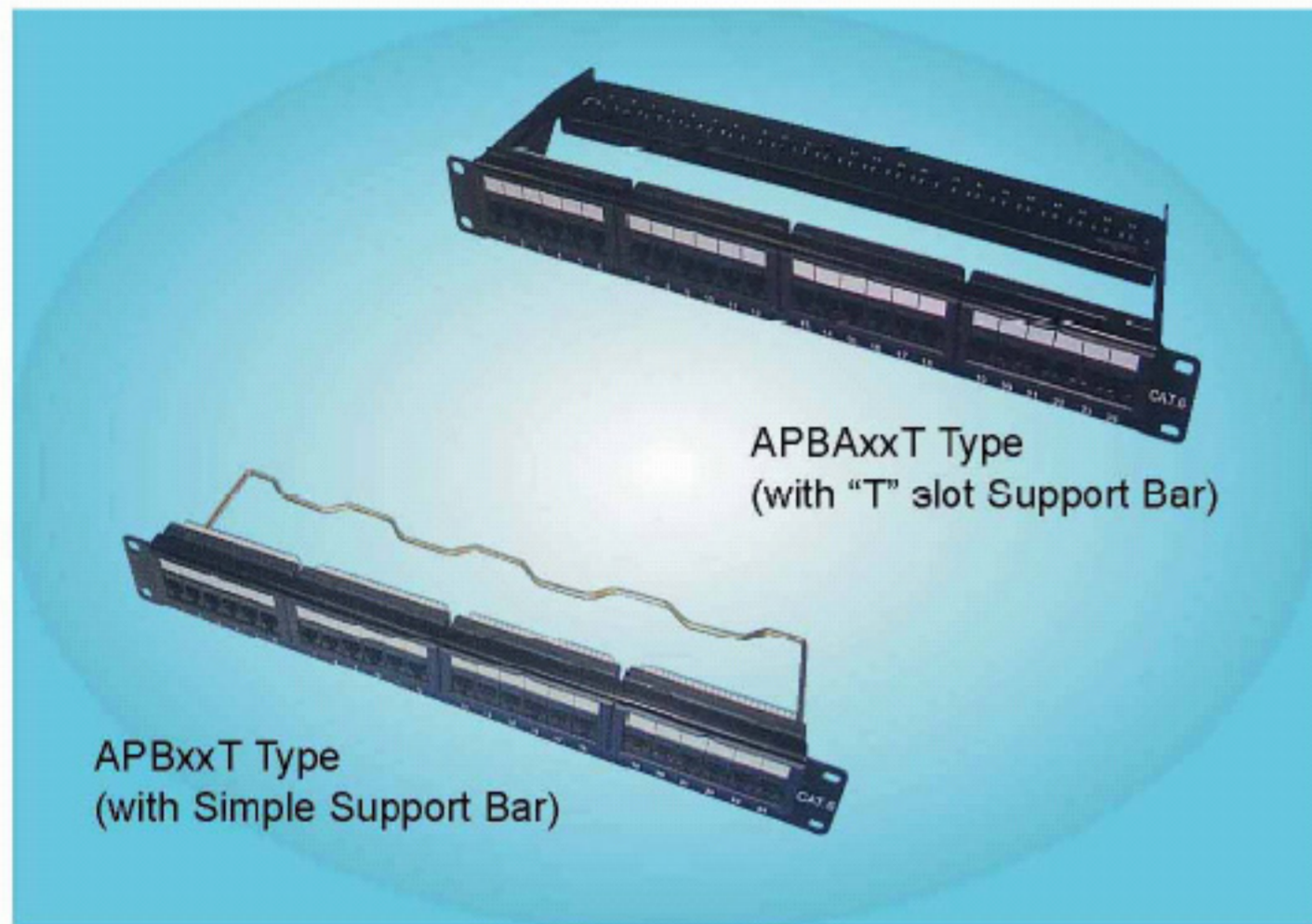
110/Krone Dual  
IDC (K11)

krone 45°- 110  
Dual IDC (KDA)

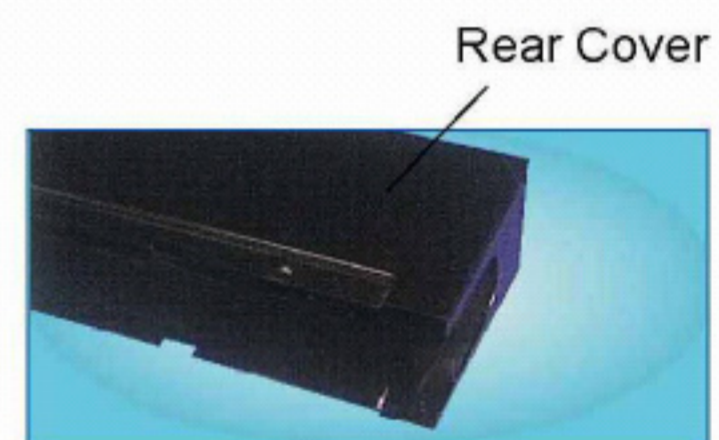
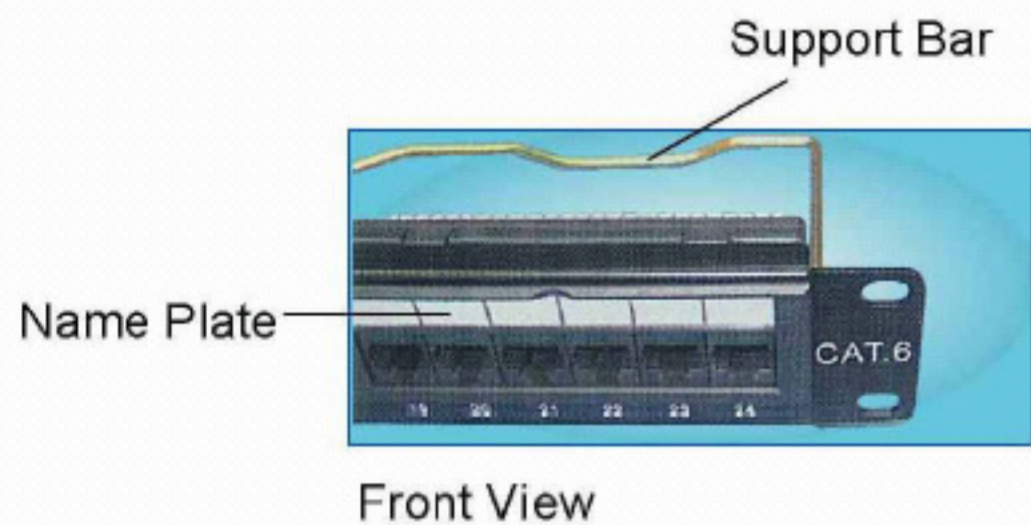
Krone IDC  
(KRO)

# UTP Patch Panel With Cover / Support Bar

## Cat.5E / 6 UTP Patch Panel With Support Bar



## Cat.5E / 6 UTP Patch Panel, With Rear Cover



### Features:

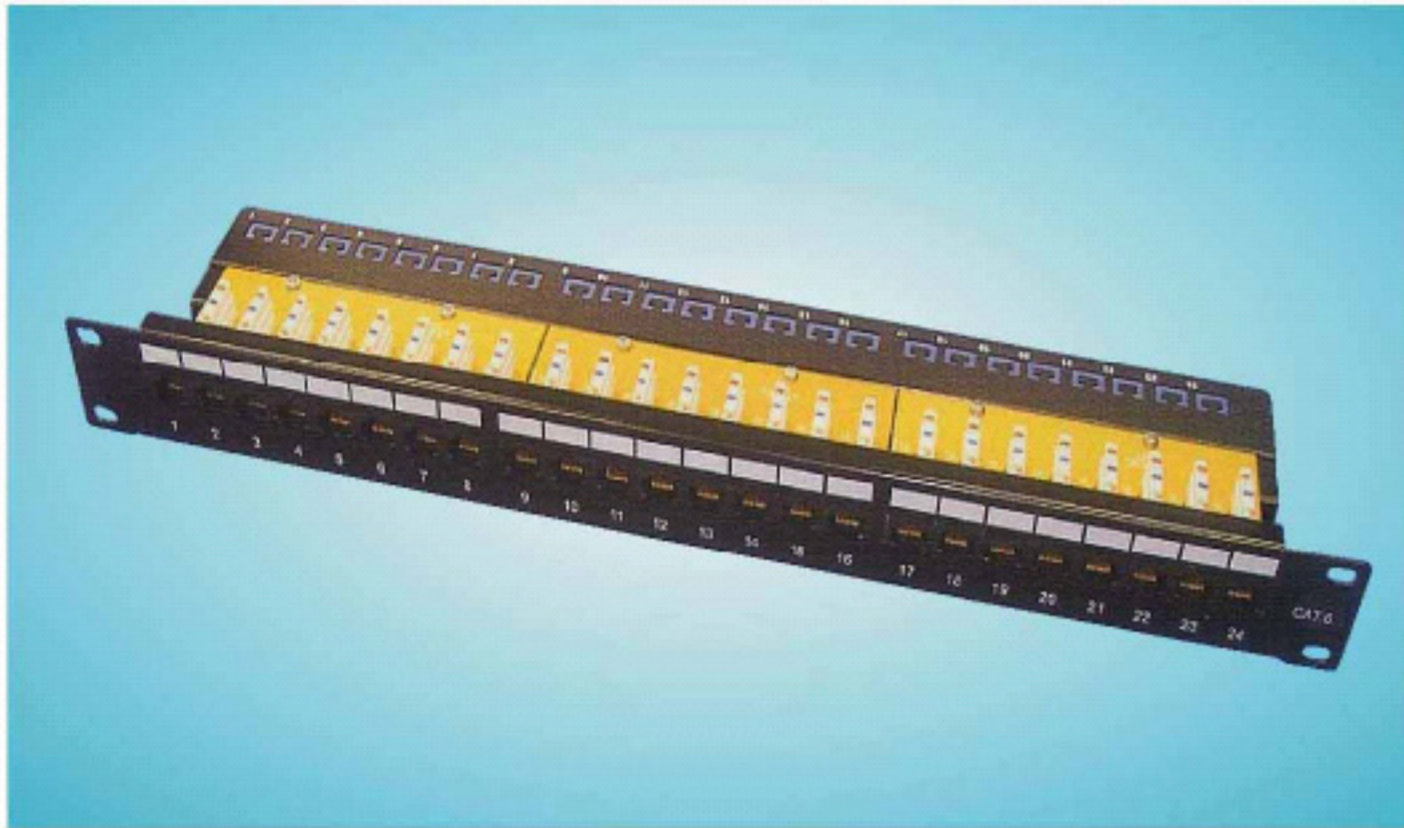
- ◆ Name Plate: Identify different port allocation/assignment
- ◆ Support Bar Device: Avoid cable from over bending
- ◆ Krone 45°-110 Dual IDC: Compatible for 110 & Krone punch tool
- ◆ Back Cover Device: Avoid PCB damage caused by installation

### Features:

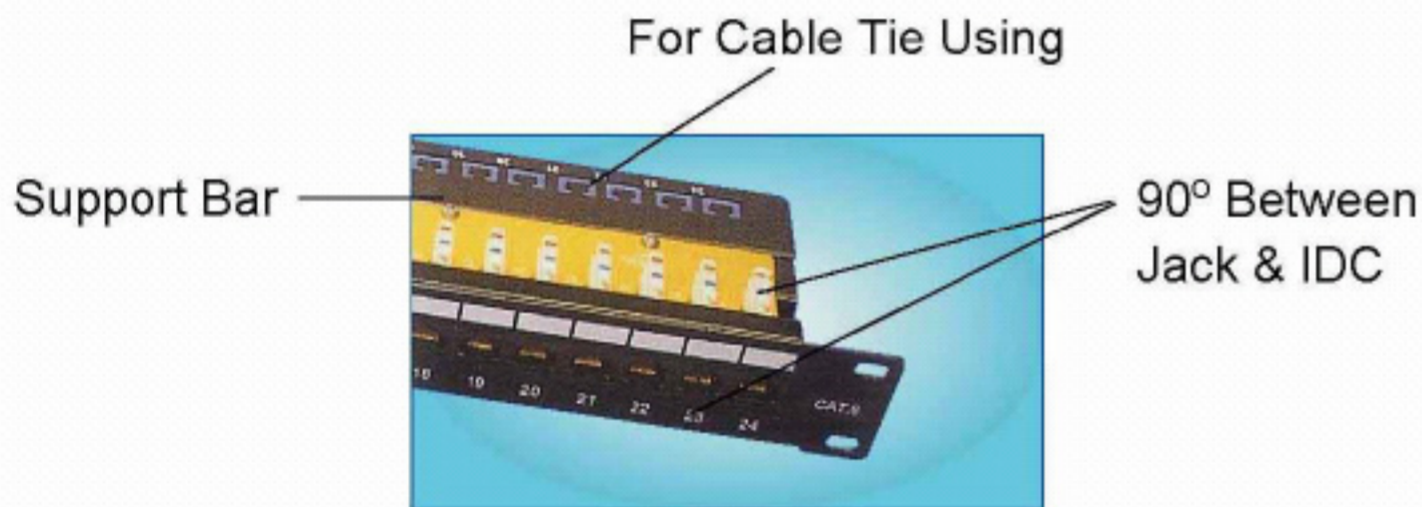
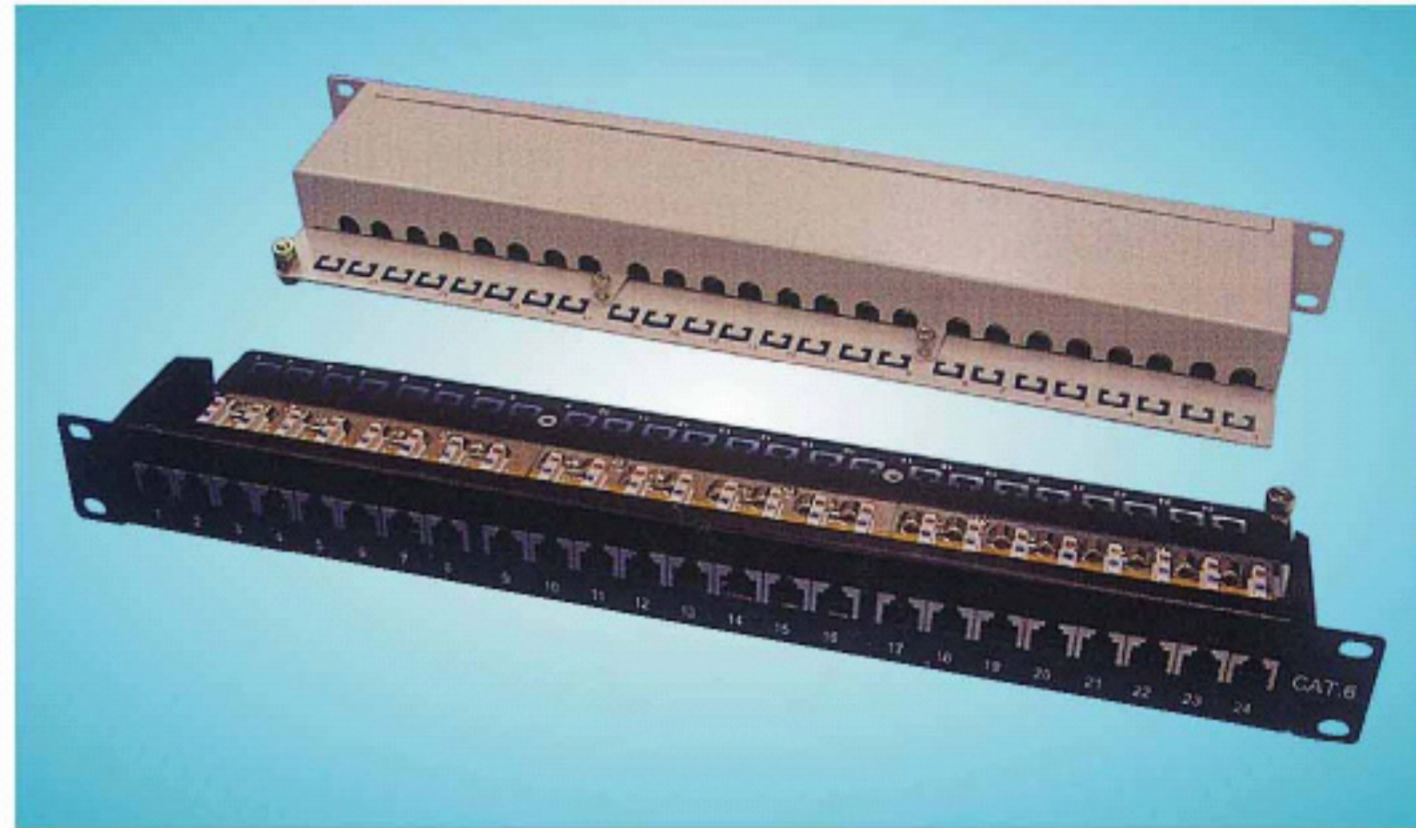
- ◆ Rear Cover Device
  - As a Support Bar to Avoid Cable Bending.
  - As a Cable Management with good looking.

# 90° Type / Full Shielded Patch Panel

## Cat.5E / 6 UTP Patch Panel, 90° Type, With Support Bar

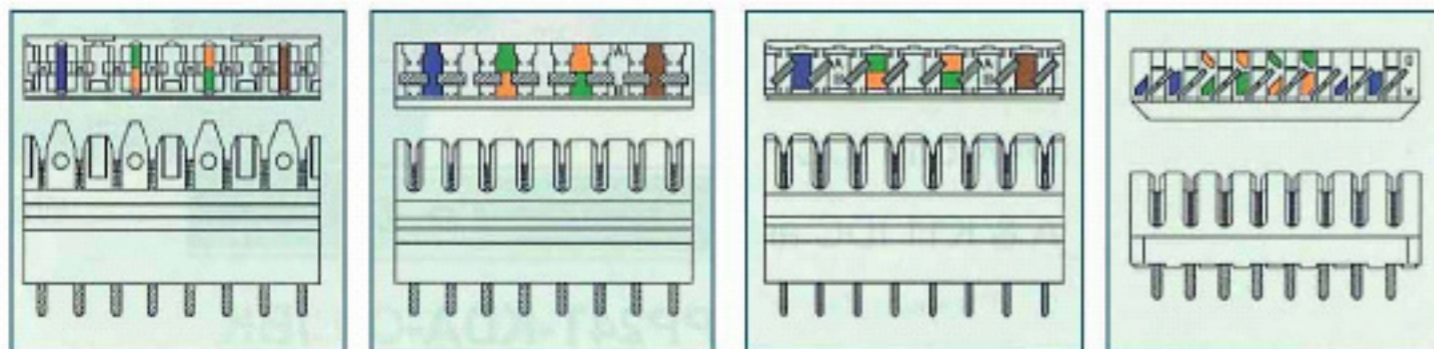


## Cat.5E / 6 Full Shielded Patch Panel



### Features:

- ◆ Friendly Installation: 90° Between Jack & IDC, to Save strength when punching the wires.
- ◆ Support Bar Device: To Avoid Cable Bending.



Standard 110D  
IDC (A11)

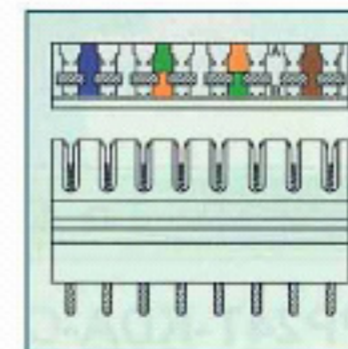
110/Krone Dual  
IDC (K11)

krone 45°- 110  
Dual IDC(KDA)

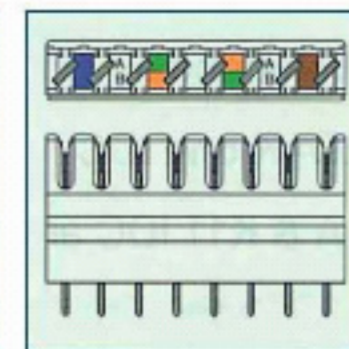
Krone IDC  
(KRO)

### Features:

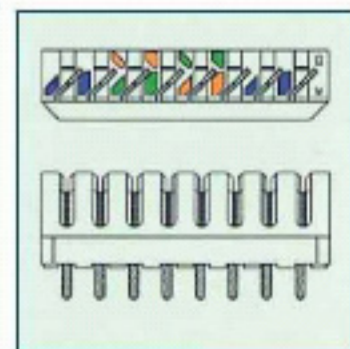
- 
1. Full shielded RJ45 jack
  2. 8-Pin Terminal Block: Combines 2 wiring print of T568A&B to save stock
  3. Cable Clip: Holds two cables tightly by screws for two cables at one time, meanwhile press foil or braid shielded to contact ground, and keep the cable straight.
  4. Cable Tie: Optional for enhanced security
  5. Port Numbering: Identify the exact port numbering on the back side, easy and effective installation
  6. Chassis Ground Pin (6.0mm screw & nuts)



110/Krone Dual  
IDC (K1)



krone 45°- 110  
Dual IDC(KD)



Krone IDC  
(KR)