

# New Cat.6 Dust Cover Type Patch Panel & Keystone Jack

- Comply Connecting Hardware Test according to TIA/EIA568-B-2.1, ISO/IEC-11801 2nd version.
- "Patented" dust cover design, it is easy to assemble and maintain.
- With high density small design to reduce the cost.
- 110/krone compatible terminal design.
- Dual T568-A/B wiring label.
- Housing are available in other colors and transparent dust cover.
- Meet TIA-606 management standard.

## Specifications

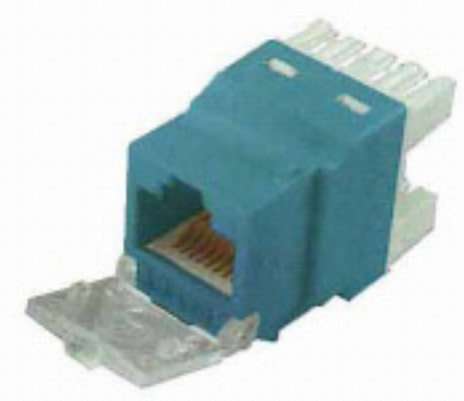
Housing is fire-resistance ABS  
 Contacts are 50u" gold-plated  
 Jack insertion life cycles >750  
 IDC insertion life cycles >250  
 Contact resistance : 20M ohm  
 Current rating : 1.5Amps  
 DC resistance : Max.0.1ohm  
 Operating temperature : -40~+60 C degrees

## Features

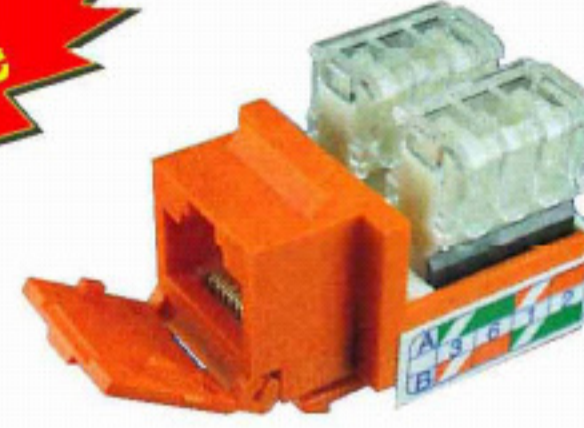
T-568A/B wiring  
 Complies with FCC part 68 standard  
 Provides termination for 22~26 AWG wire



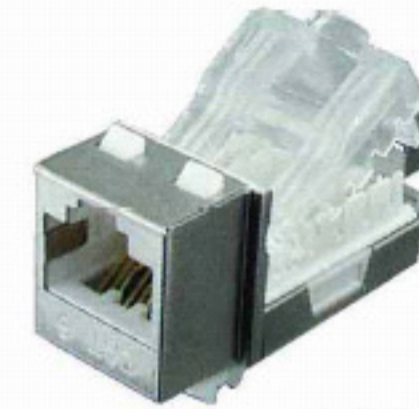
AKY-504E



AKY-504-180

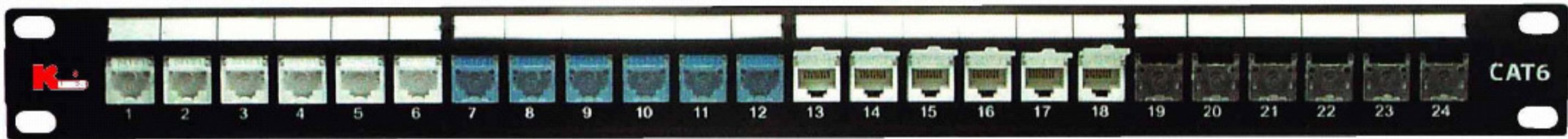


AKY-504

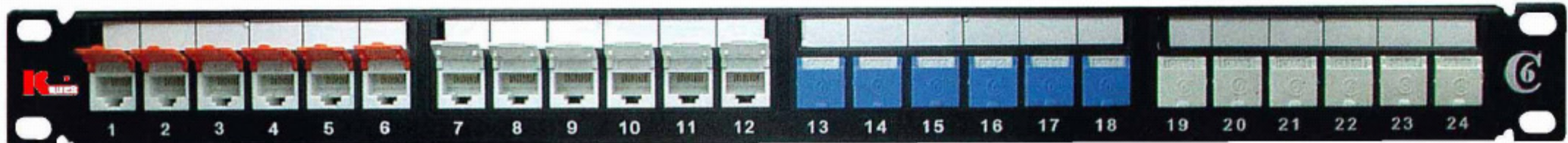


AKY-504S

Part No.	Description
AKY-504-180	CAT.6 RJ45 keystone jack 180 degree
AKY-504	CAT.6 RJ45 keystone jack 90 degree
AKY-504E	CAT.6 RJ45 tool-less keystone jack 90 degree
AKY-504S	CAT.6 RJ45 tool-less keystone jack 90 degree (shielded)



AKY-508-24K-C6 ( clear Mac color )



AKY-508-24K-C6UM ( full color )

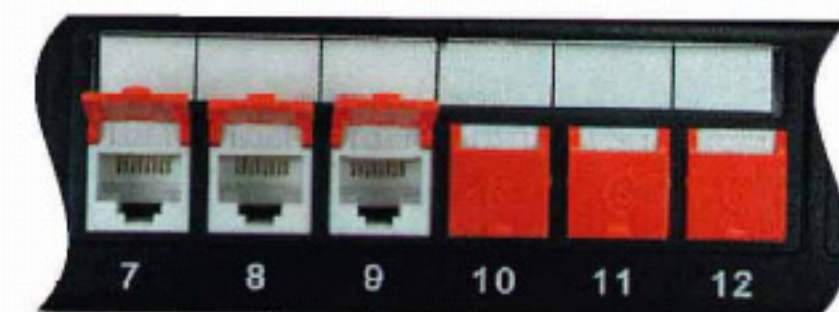
- Patented no screws 6 port design for easier cable management.
- Characteristic exceeds TIA/EIA568-B2.1, ISO/IEC-11801 2nd version.
- Patented dust cover design.
- With write-on label, it is easier to identify.
- 110/Krone compatible terminal design.
- Dual T568A/B wiring label.
- The write-on label can be used with color labels for better management.
- With metal and plastic cable management as options.



metal cable management



back

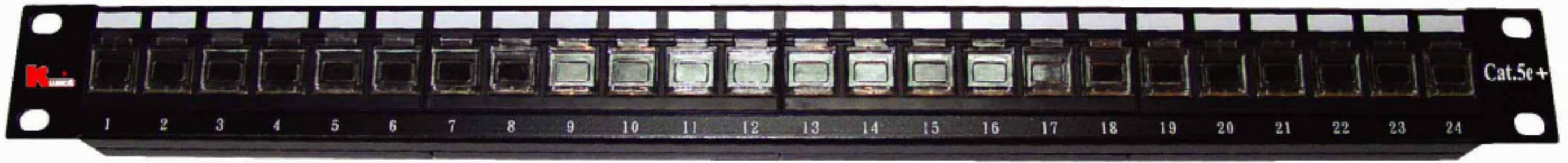
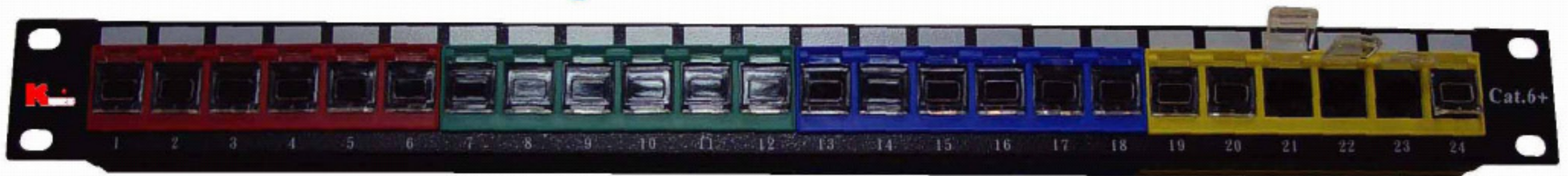


front

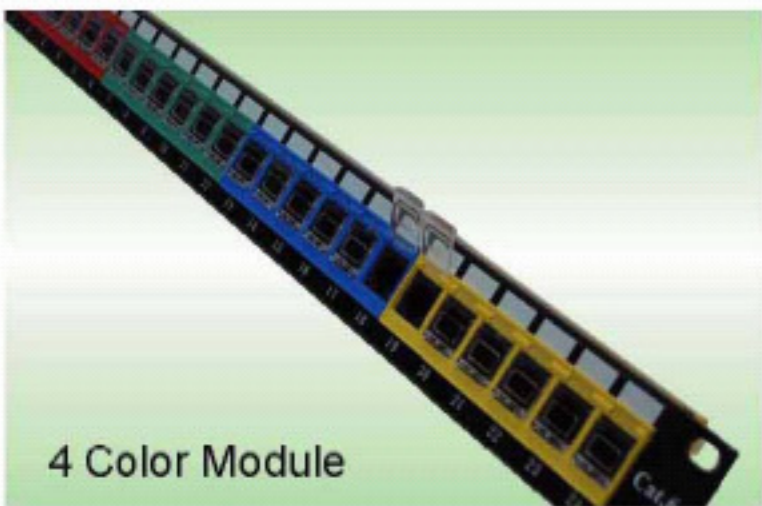
Part No.	Description
AKY-508-24K-C6	CAT.6 24 port keystone patch panel (6x4)
AKY-508-24K-C6UM	AKY-508-24K-C6 with metal cable management

# New Shutter Design Patch Panel

## Cat6+ & Cat.5e+ Clear Shutter Design Patch Panel



Cat.6  
Enhanced



4 Color Module



Clear Shutter

## Cat.6 Full-Shield Shutter Design Patch Panel



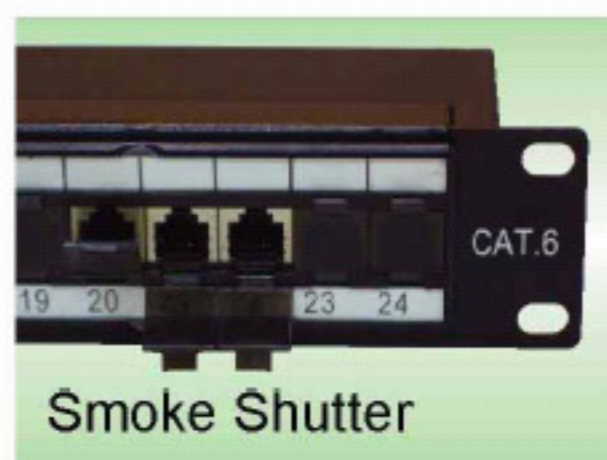
90 Deg.  
Punch Down

### Feature

- Full shielding metal structure has superior performance.
- Name Plate identify different port Assignment
- Ground cable with handy revolved screw
- GHMT Connecting Hardware Certificate
- Interlaced Krone IDC design
- Jack Cover protect from dust



Full-Shielded



Smoke Shutter

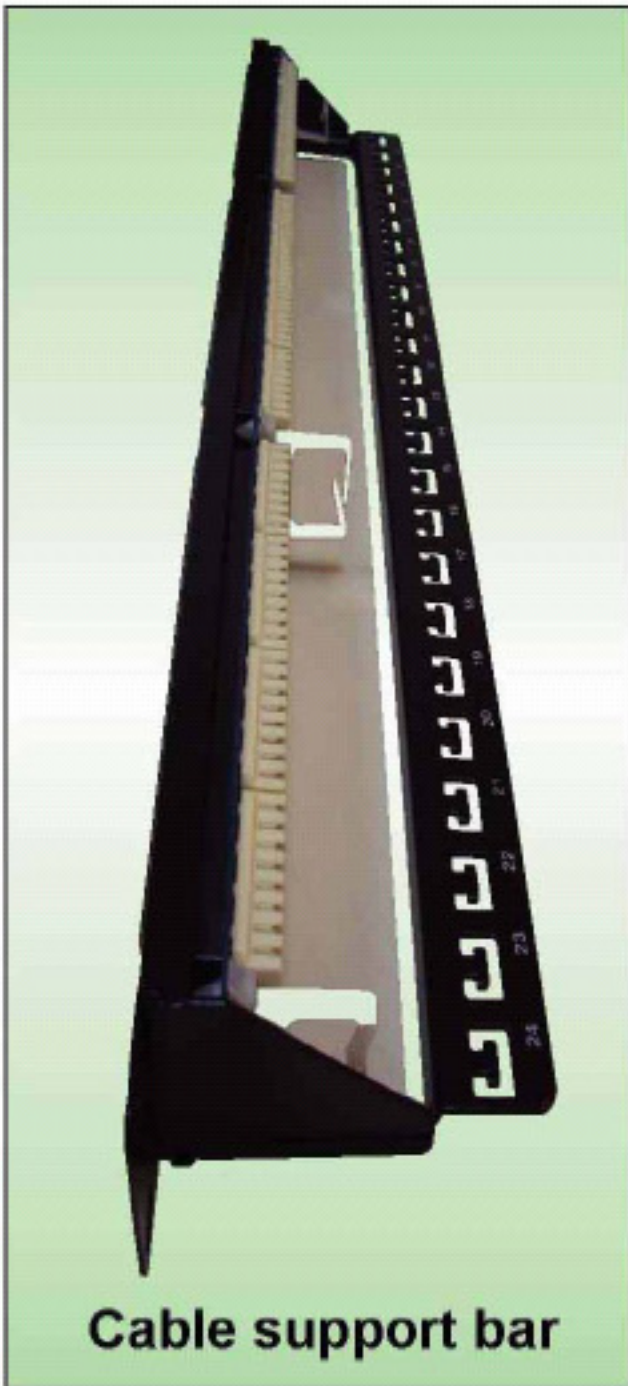
# Cat.6 Unshielded Shutter Design Patch Panel



- (A) With Name Plate
- (B) Shutter Design (plastic)
- (C) Screw Cover

## Feature

- Neat Front View with Screw Cover
- Name Plate - Identify Different Port Allocation
- Shutter Design
- Krone Dual IDC - Compatible with 110 & Krone Punch Tool
- Cable Support Bar - Avoid Cable over Bending
- Cat.6 Connecting Hardware Performance



# Economic Type Cat.5e / Cat.6 Patch Panel



## Feature

- Name Plate Identify Different Port Allocation
- Support Bar Avoid Cable over Bending
- Neat Flush Surface in Front View
- Krone & 110 Punch Tool Compatible
- 16 / 24 / 48 Port are Optioal
- 3P Cat.6 Channel Certified Performance

